



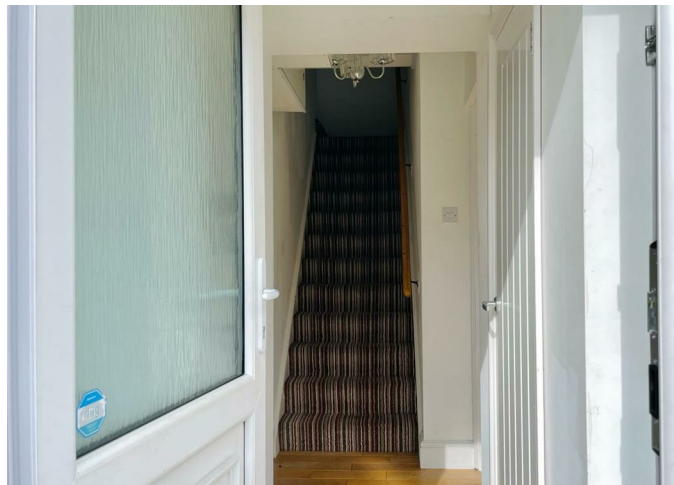
House - Semi-Detached

**3 SHELLARD ROAD,  
FILTON, BRISTOL,  
GLOUCESTERSHIRE,  
BRISTOL, BS34 7LS**

PCM

**£2,600 PCM**

FEATURES



# 4 Bedroom House - Semi-Detached located in Bristol

Double Bedroom  
with bathroom

Double Bedroom.

Double Bedroom..

Double Bedroom...



BESTE JEFFERS | 69 OAKFIELD ROAD, CLIFTON, BRISTOL, BS8 2BB

Call us on


01173259720

lettings@bestejeffers.co.uk

<https://beste-jeffers.cosyflo.co.uk>

**Council Tax Band**

**B**

Energy Efficiency Rating		
	Current	Potential
<i>Very energy efficient - lower running costs</i>		
(92 plus) <b>A</b>		
(81-91) <b>B</b>		
(69-80) <b>C</b>		
(55-68) <b>D</b>		
(39-54) <b>E</b>		
(21-38) <b>F</b>		
(1-20) <b>G</b>		
<i>Not energy efficient - higher running costs</i>		
<b>England &amp; Wales</b>		EU Directive 2002/91/EC 

Agents Note: Whilst every care has been taken to prepare these particulars, they are for guidance purposes only. All measurements are approximate and are for general guidance purposes only and whilst every care has been taken to ensure their accuracy, they should not be relied upon and potential buyers are advised to recheck the measurements.

